

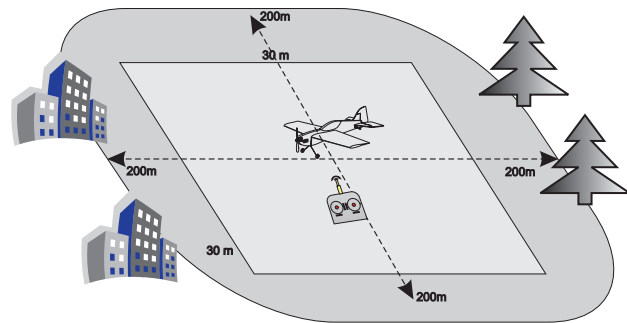
## Upozornění - Caution - Achtung

**Nikdy nelétejte blízko:**  
Lidí a zvířat  
Staveb a obydlí  
Silnic, dálnic a železnic  
Vysokonapětových vedení



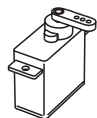
**Do not fly airplane near:**  
People or animals  
Buildings  
Roads or railway tracks  
Power lines

**Niemals in der Nähe von:**  
Menschen oder Tiere  
Gebäude  
Straßen und Eisenbahn  
Überlandleitungen



## Doporučené příslušenství / Recommended Accessories

4x

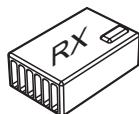


HS-55

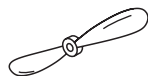


AXI 300/34

Min. 5 ch

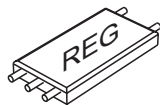


MS-027,028,029

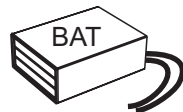


APC 9 / 4.7  
APC 10 / 4.7

3 phase



JETI Advance 18+



3s Li-Pol 1250 mAh  
3s Li-Pol 1500 mAh

Rozpětí / Wingspan / Spannweite : 850 mm  
Délka / Length / Länge : 850 mm  
Hmotnost / Weight / Gewicht : 320g...400g

# MS

COMPOSIT

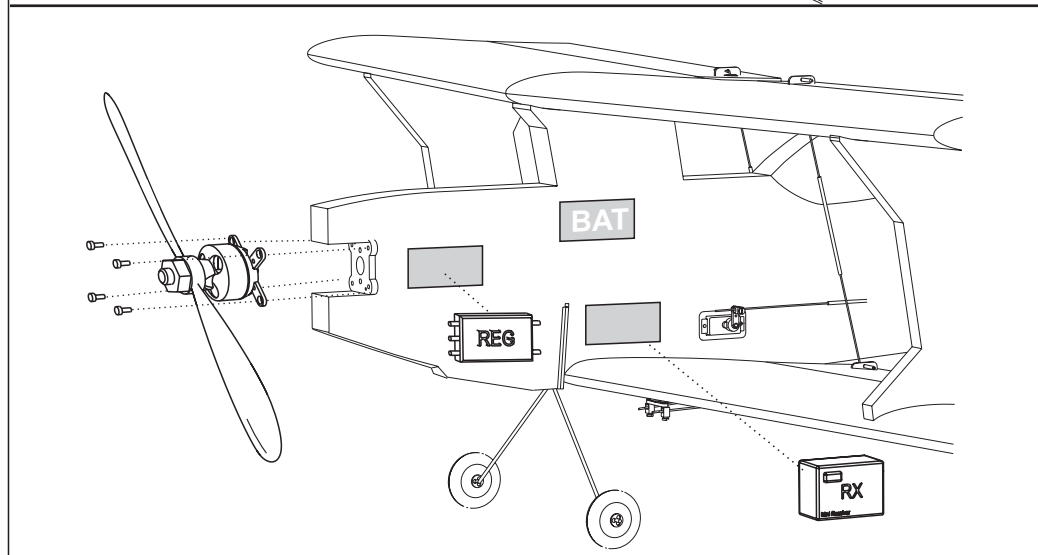
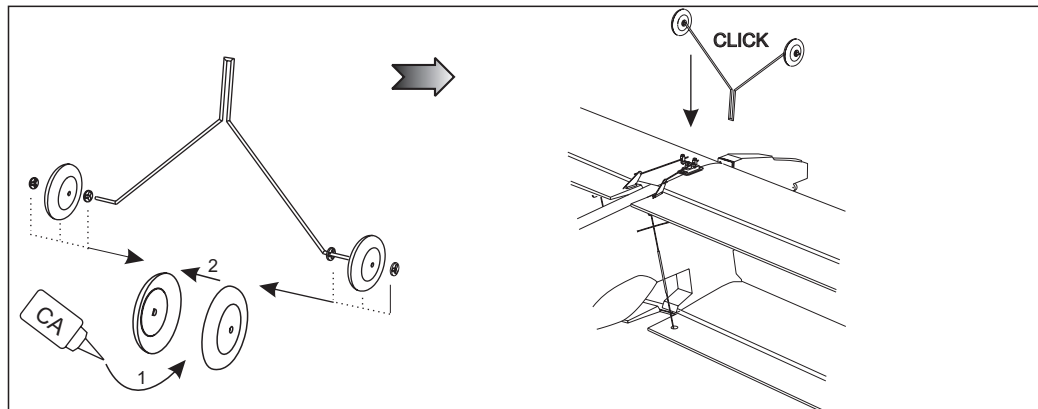
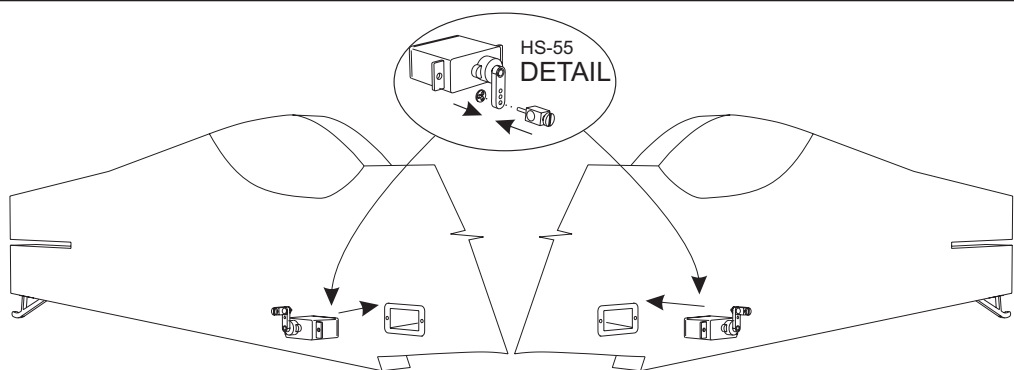
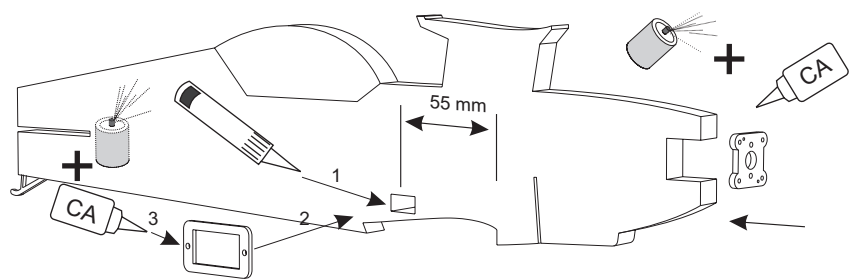
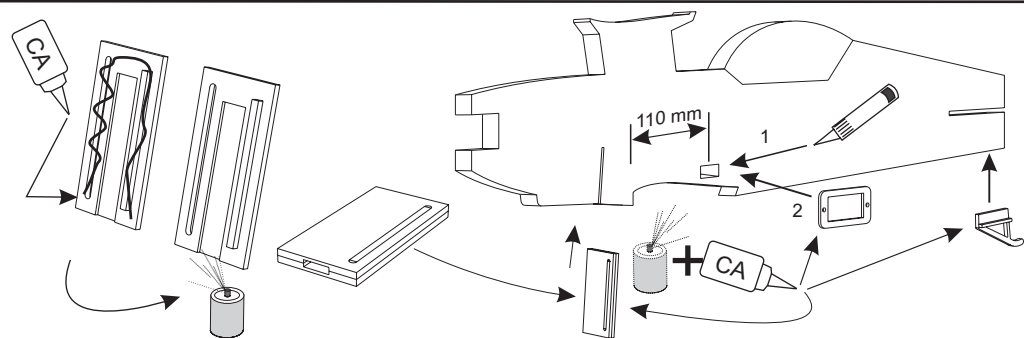
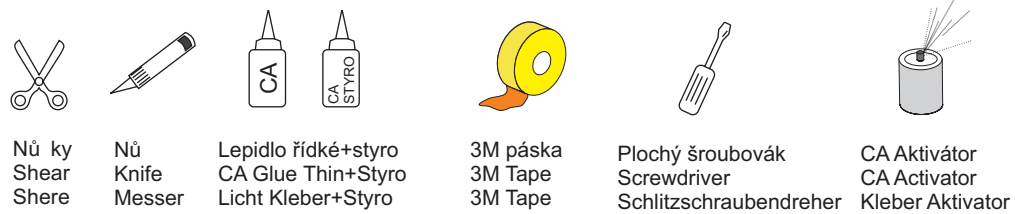


## Pitts S2

## MS - 24000

Instructions manual - pictures  
Montageanleitung - Zeichnungen  
Montážní návod - obrázky

Co potřebujete / What do you need / Sie werden brauchen



Nastavení / Set-up / Einstellung

